

Winfree Church Community Profile

Based on Zip Codes

Setting: Situated in [Chesterfield County](#), Midlothian, Virginia, is an unincorporated village just 14 miles west of Richmond that's known for its proud [coal mining and railroad history](#), old churches, and unique shops. Today, the Midlothian neighborhood is a burgeoning commercial and residential community that combines historical ambiance with modern amenities, and what makes it a desirable choice for many. The community is experiencing an apartment and townhouse building boom.

Midlothian Demographics:

Population within membership area: 511,614

Median Income: \$97,395

College Educated: 48.7%

Employment: 72.0% White Collar, 14.4% Blue Collar, 13.6% Services

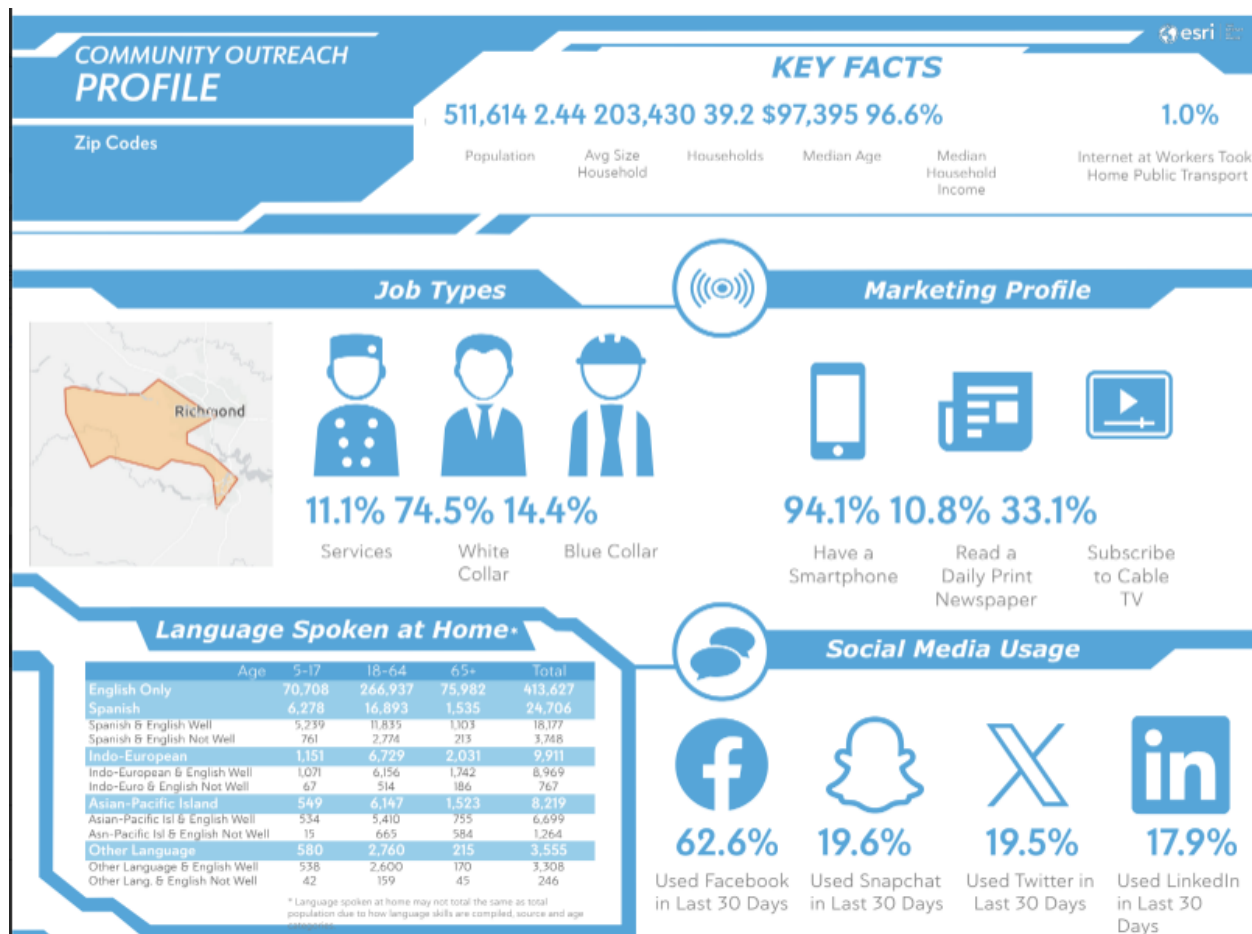
Ethnicity:

Race Distribution

White	63.3%
Black	20.4%
Asian	3.8%
Other & Mixed Races	12.5%

Age:

Median Age:	39.2
Dominate Age Ranges:	18-64 years old 65.1%
	5-17 years old 17.2%
	65+ years old 17.7%



Conveniences: Multiple grocery stores, retail shopping, medical facilities, sports facilities, libraries, county & state parks, and 35 minutes from Richmond International Airport.

School Information:

- Chesterfield County School Website <https://www.oneccps.org/>
 - 100% accredited
 - 67 Schools
 - 64,000 students
 - \$1Billion School Budget
- School Zone for Winfree Church: JB Watkins Elementary, Midlothian Middle School, Midlothian High School.
 - Additional Schools close by:
 - Elementary Schools: Old Hundred Elementary, Gordon Elementary, Evergreen Elementary, Robious.
 - Middle Schools: Tomahawk, Swift Creek, Robious
 - High Schools: Clover Hill, Monacan, James River, Manchester, Governors School
- Chesterfield County has 13 specialty and regional high school programs available to students
- Area Private School options: Banner Christian (K-12), St. Edward Catholic (JK-8), Blessed Sacrament Catholic (K-12), Millwood School (K-12), Trinty High School (8-12)

Real Estate Information:

- Median Home Value: \$426,874

Chamber of Commerce Information:

- Chesterfield County is not dependent on tourism; however, tourism is growing with the River City Sportsplex, construction of a new water park off 288, Metro Richmond Zoo, historical sites, and SwimRVA Aquatic facility.
- Major industry in Midlothian VA: Retail, Service industries

Major employers in Richmond area:

- VCU Health System, Capital One Financial, HCA Virginia Health System, Bon Secours Richmond, Virginia Commonwealth University, Dominion Energy, Amazon, Truist, Altria Group, Federal Reserve Bank Richmond.

Safety: Chesterfield County provides a robust suite of services to keep our community safe and secure. <https://www.chesterfield.gov/151/Safety-and-Security>

Neighborhoods Surrounding Winfree Church: The Grove, Charter Colony, Walton Park, Queensmill, Cross Creek, Salisbury, Stonehenge, Brandermill, Smoketree, Old Coach.

